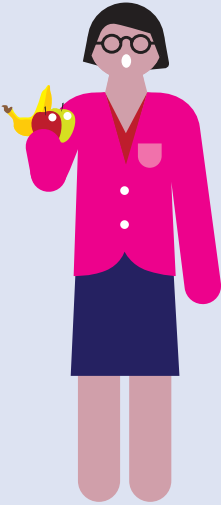




professional  
standards  
authority

**RSPH**  
ROYAL SOCIETY FOR PUBLIC HEALTH  
VISION, VOICE AND PRACTICE



**Untapped Resources:**

**Accredited Registers in  
the Wider Workforce**





The public health **challenges** the **UK** faces are deep-rooted and severe



Over **60%** of **adults are overweight** or obese and stark health inequalities characterise modern Britain

**Improving** our **nation's public health** is **critical** to reduce our reliance on welfare and healthcare



The core public health workforce totals around **40,000 people**

But there is a largely unseen, **wider public health network** of professionals who support the public's health every day

The Accredited Registers (AR) workforce of **85,000 professionals** is well placed to help promote public health

The Untapped Resources report uncovers the ways this workforce are already **supporting public health and explores factors** that may prevent them doing more

## WHO IS ON AN ACCREDITED REGISTER?

Practitioners span a diverse range of occupations. They are not regulated by law but have chosen to register with organisations which have been independently assessed by the Professional Standards Authority.



**In total, there are over 85,000 practitioners on accredited registers across the UK, working in the following areas:**

Talking therapies	50,000
Complementary therapies	20,000
Healthcare science	9,300
Play therapies	2,400
Foot health	1,800
Public health	950
Sports rehabilitation	750
Non-surgical cosmetic interventions	400
Healthcare chaplaincy	400

## WHO DO THEY TREAT?

Their services are predominantly accessed privately, funded by the patient, representing an access problem to those with lower incomes. Nevertheless, with approximately one in four of the general UK population accessing the services of AR practitioners at some point, this workforce has huge potential to support the public's health at a significant scale.

### Did you know?

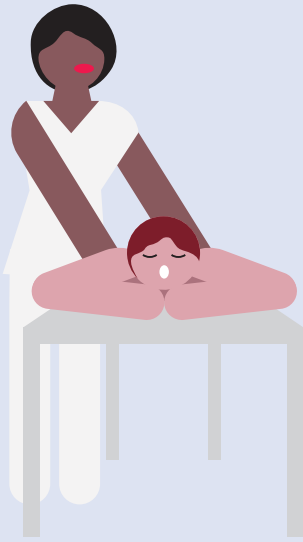
**94%** average 40 mins+ per appointment  
**89%** consider promoting public health to be part of their role

## SO, WHAT'S PREVENTING THIS WORKFORCE FROM DOING MORE?

The report made several recommendations, including

- Remove (or mitigate) barriers to public accessing treatment from ARs
- AR practitioners to be able to refer directly to NHS professionals
- ARs to consider a health assessment tool
- Improved signposting by local public health teams to all ARs

**To download the full report, go to [www.untappedresources.co.uk](http://www.untappedresources.co.uk)**



For more information, please contact either:

Toby Green • [tgreen@rsph.org.uk](mailto:tgreen@rsph.org.uk)  
Royal Society for Public Health  
John Snow House  
59 Mansell Street, London E1 8AN  
Tel: +44 (0)20 7265 7300  
[www.rsph.org.uk](http://www.rsph.org.uk)

© RSPH 2017  
Charity Registration Number 1125949

Graham Mockler  
[graham.mockler@professionalstandards.org.uk](mailto:graham.mockler@professionalstandards.org.uk)  
Professional Standards Authority  
157-197 Buckingham Palace Road  
London SW1W 9SP  
Tel: +44 (0)20 7389 8037  
[www.professionalstandards.org.uk](http://www.professionalstandards.org.uk)